

# Der Spiele-Atlas

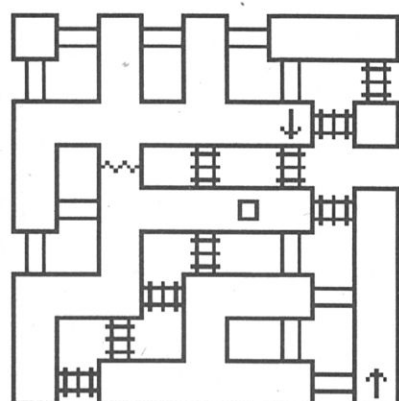


Den Durchblick bei Rollenspielen und Adventures bringen oft Karten, die man beim Spielen mitzeichnet. Hier einige Exemplare, die für Orientierung sorgen.

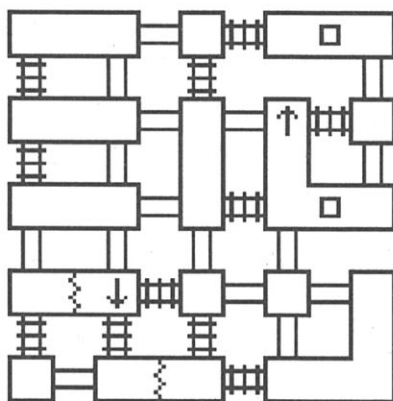


Für alle Abenteurer  
im Reich von Lord British, hat sein Kartograph Sven Ehlert alle Dungeons für den ersten Teil gezeichnet. Die Dungeons sind alphabetisch geordnet, damit man das gewünschte Labyrinth schneller findet.

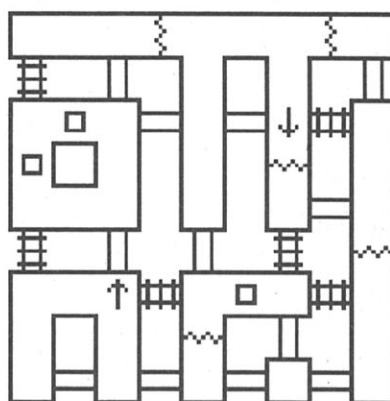
## Ultima I



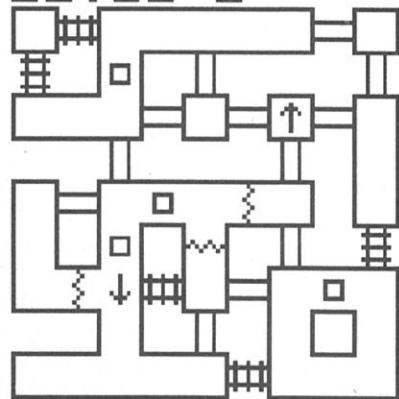
LEVEL 1



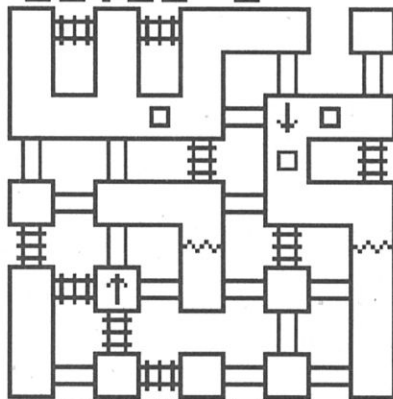
LEVEL 2



LEVEL 3



LEVEL 4



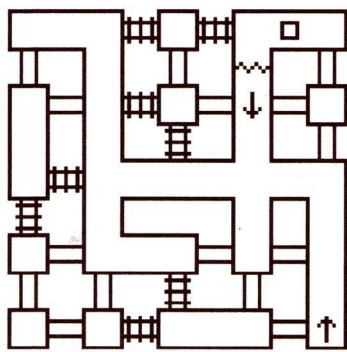
LEVEL 5

ULTIMA I:  
-----  
ADVARI'S  
HOLE

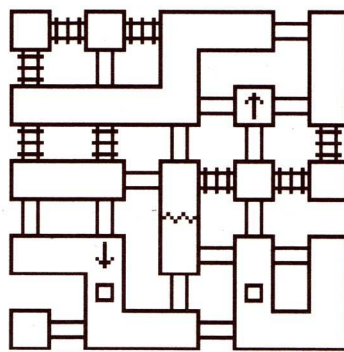
L1 - L5

S MAPPED  
E+W 1992  
N BY TMS

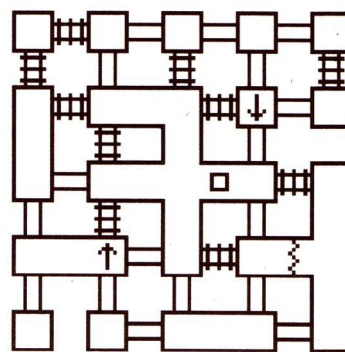




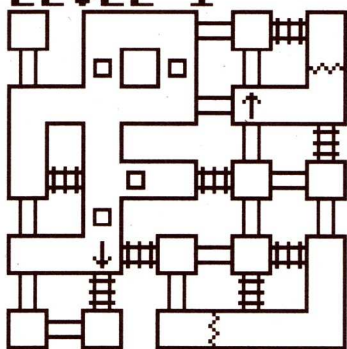
LEVEL 1



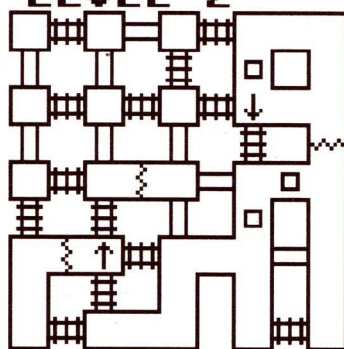
LEVEL 2



LEVEL 3



LEVEL 4

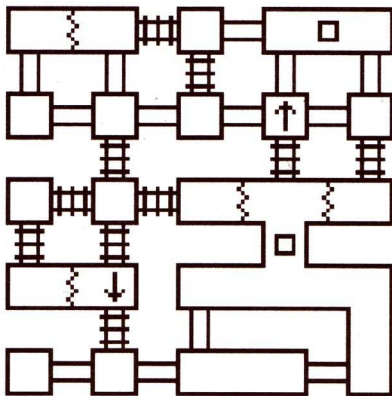


LEVEL 5

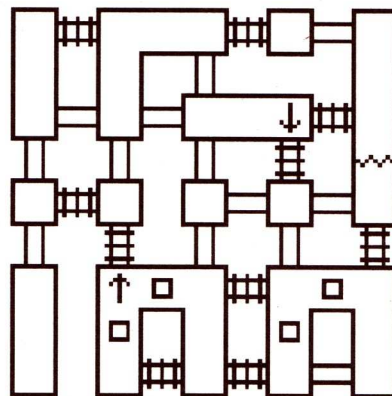
ULTIMA I:

DEAD CAT'S  
LIFE

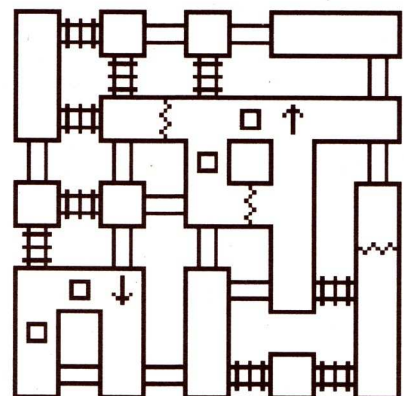
L1 - L5

S MAPPED  
E+W 1992  
N BY TMS

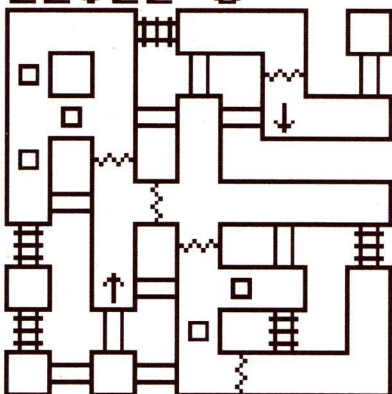
LEVEL 6



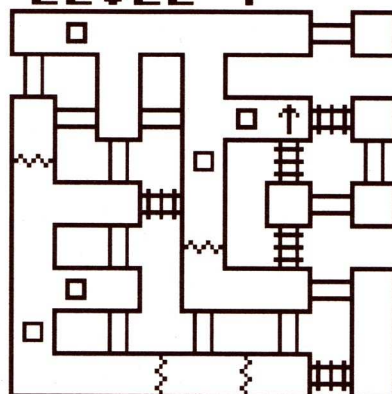
LEVEL 7



LEVEL 8



LEVEL 9



LEVEL 10

ULTIMA I:

ADVARI'S  
HOLE

L6 - L10

S MAPPED  
E+W 1992  
N BY TMS



